



**sobloos**

**AIRBUS REINFORCES COMMITMENT TO DIGITAL TRANSFORMATION**

**YOUR ALL-IN-ONE GEOSPATIAL ECOSYSTEM**

DATA

INFRA

PLATFORM

SERVICES

# AIRBUS REINFORCES COMMITMENT TO DIGITAL TRANSFORMATION



**SPEAKER**



**Lison Leonetti**  
Product Manager

# AIRBUS REINFORCES COMMITMENT TO DIGITAL TRANSFORMATION



**sobloo**



**OneAtlas**

ONEATLAS AND SOBLOO JOIN FORCES TO ENHANCE USER EXPERIENCE AND INCREASE BUSINESS POTENTIAL

# COMPLEMENTARY CAPABILITIES OF SOBLOO & ONEATLAS

## Copernicus Sentinel data

FREE

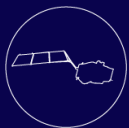
Sentinel-1



Sentinel-2



Sentinel-3



Sentinel-5P



## Copernicus core services

FREE

EMS



CMEMS



CLMS



CAMS



C3S



# sobloo

## High & very-high resolution imagery

PREMIUM

SPOT-6



SPOT-7



Pléiades 1A



Pléiades 1B



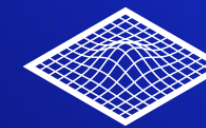
## Premium 2D and 3D Layers

PREMIUM

Basemap



WorldDEM Streaming



# OneAtlas

## COMPLEMENTARY CAPABILITIES OF SOBLOO & ONEATLAS

Copernicus Sentinel  
data

Copernicus core  
services

High & very-high  
resolution imagery

Premium 2D and 3D  
Layers

**sobloo**

+

**OneAtlas**

Unified authentication system on both platforms: a first step towards collaboration

# UNLEASH THE POTENTIAL OF EARTH OBSERVATION DATA



Precision  
agriculture



Forest  
Monitoring



Maritime



Disaster  
Monitoring



Homeland  
security

## BRINGING VHR AND COPERNICUS DATA TOGETHER TO UNLEASH THE POTENTIAL OF EARTH OBSERVATION

## KEY BENEFITS



### EASY & QUICK ACCESS TO DATA

Medium & VHR data



### PAY ONLY FOR WHAT YOUR NEED

Better manage  
your costs



### FRESH DATA EVERY DAY

Thousands of images  
ingested daily



### GUARANTEED INTEROPERABILITY

With OGC compliant APIs to  
search, view & download  
easily



### EXTENDED ARCHIVES

8 years of global Pléiades & SPOT archive  
And Corpenicus Archive



### GUARANTEED ACCURACY

Ortho-rectified imagery as a  
standard & very high imagery  
quality



Dual use of VHR and copernicus data is expected by the community of Geospatial data users.

Example from our customer:

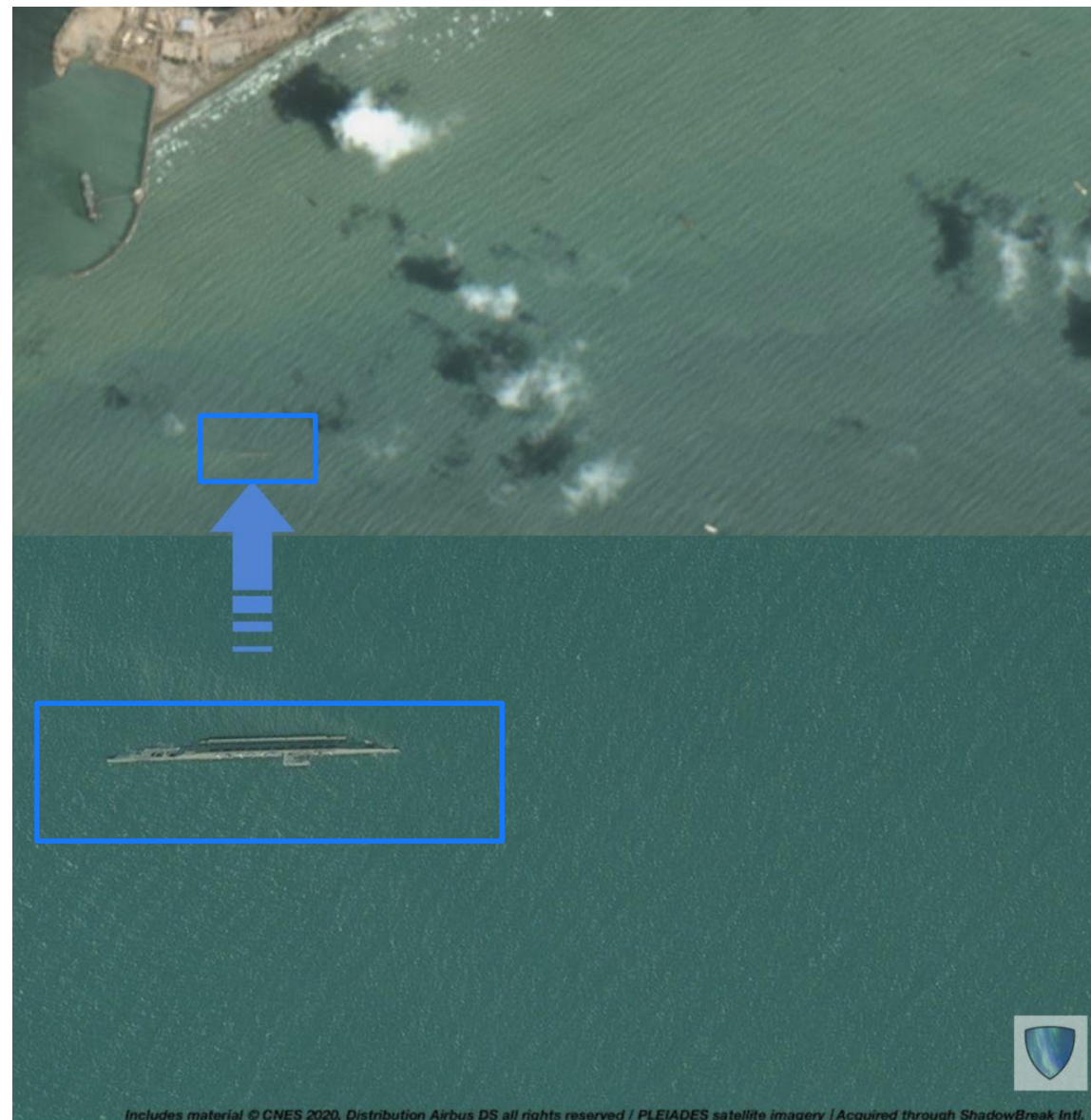


Jasper Smallenbroek 👤 • 1er  
Real-Time Geospatial Collaboration  
1 mois • Modifié • 🔒

This is how to use free [#sentinel](#) satellite imagery for change detection and high-res [#airbus](#) imagery for confirmation.

Analysis done using imagery acquired through [ShadowBreak Intl](#) by our friends AuralIntel. Imagery shows capsized [#IRGC](#) replica of the Nimitz Class aircraft carrier which was moved earlier on 31st July.

<https://auroraintel.net/> [#insights](#) [#intelligenceanalysis](#)







## Why?

- Gives access to a new wealth of data to enhance applications and services
- Expands the Copernicus EO ecosystem by interconnecting different communities
- Gives a new audience to VHR data

## How?

- With a User Identification unification as a first step toward a fully integrated platform



## Sentinel-2

To monitor globally the limits of the Djoudj National Park: vegetation, water, agriculture, rivers and the dike lines.



## Pléiades

To focus on the dike and all the infrastructures of the National Park





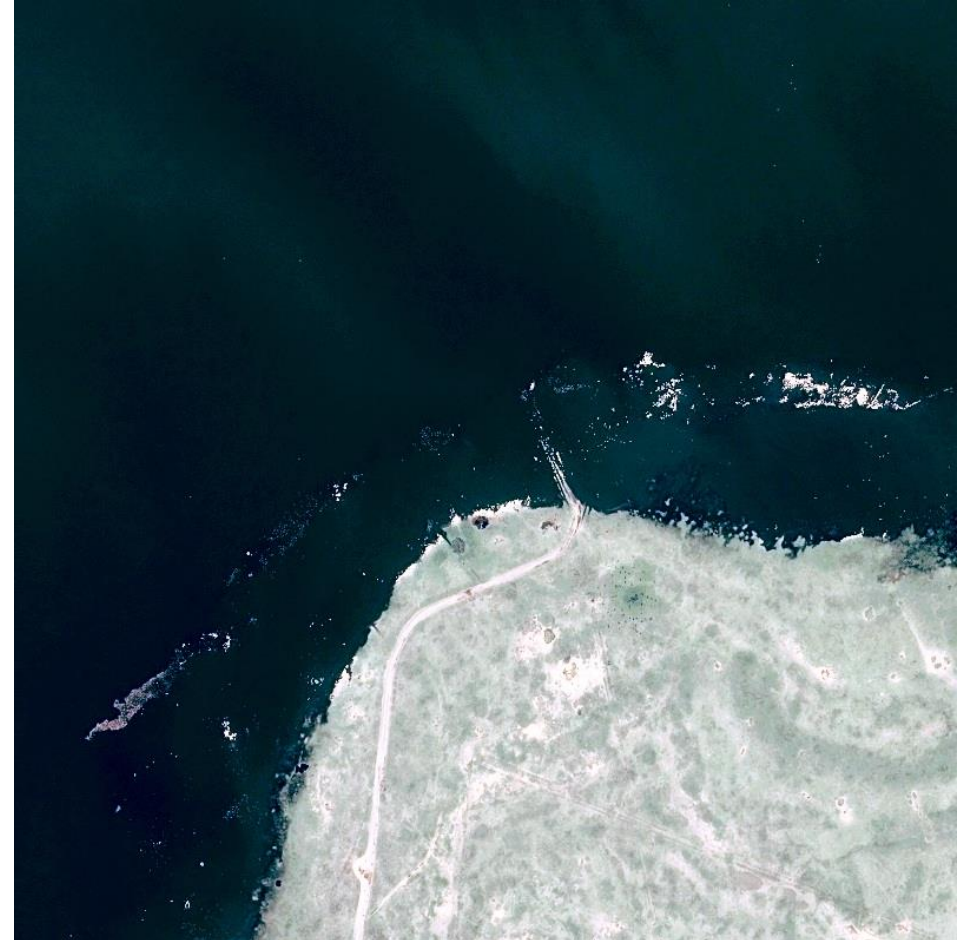
### Sentinel-2

Monitor the water levels, agriculture parcels, forest or human activities impacts with Sentinel-2 data



### Pléiades

Monitor the evolution of flamingo population



Copernicus core services

EMS CMEMS CLMS

CAMS C3S

What about complementarity between Copernicus Core Services and VHR data?

What about complementarity between Copernicus Core Services and premium Airbus layers?

LET'S BRING ONEATLAS AND SOBLOO DATA TOGETHER TO UNLEASH THE POTENTIAL OF EARTH OBSERVATION

Premium 2D and 3D Layers

PREMIUM

Basemap

WorldDEM Streaming

# Useful links and contacts

Sobloo website: <https://sobloo.eu>

Contact: [info@sobloo.eu](mailto:info@sobloo.eu)



@soblooservices



@sobloo



@soblooservices