

OME2 Outputs and Data Licensing at EuroGeographics

Oliwia Marszalek
Membership and Data Officer



Enabling access
to members' data
and expertise



Representing
members'
interests



Providing opportunities
for knowledge
exchange

“Positioning EuroGeographics as an enabler that allows users and key stakeholders easy access to members data”

Open Maps For Europe 2 Project 2023-2025



Production process
and prototype for
harmonised large-scale
data



Aligned to EU Policy
objectives and UN
core geospatial data
recommendations



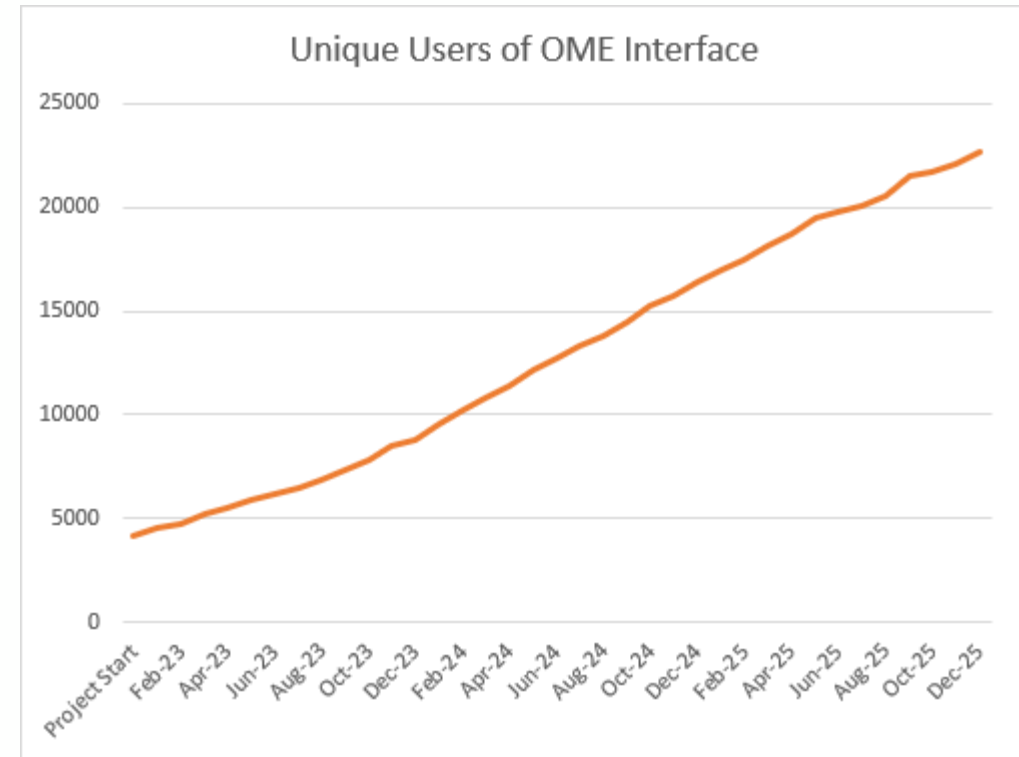
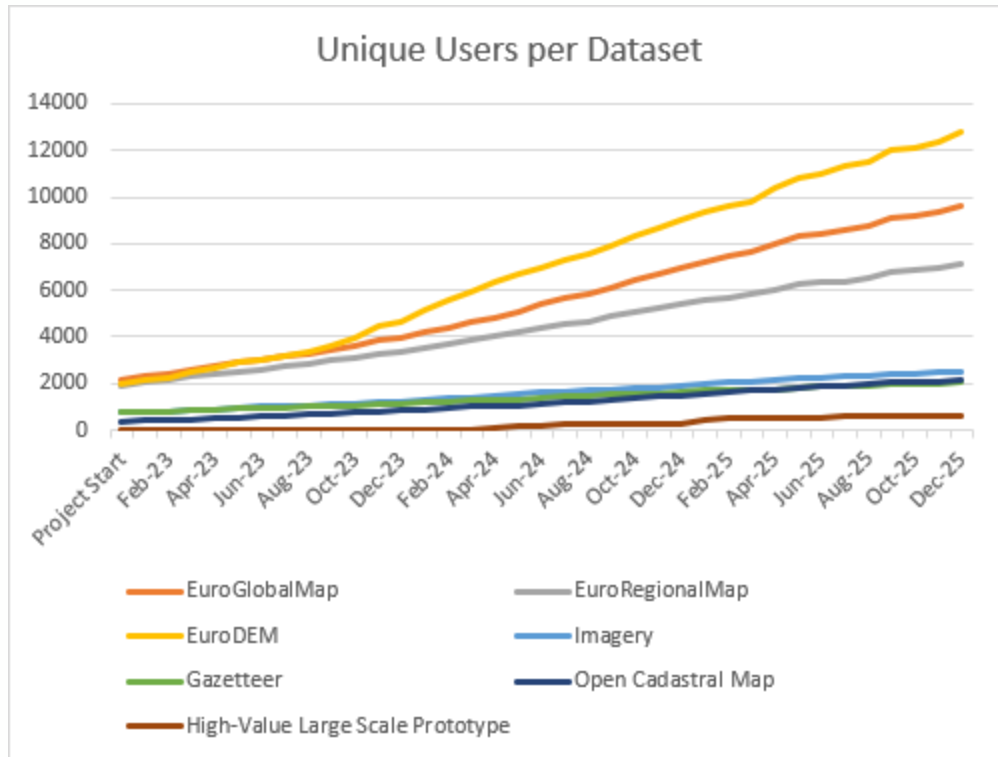
Foundation for future
pan-European high-
value datasets

OME2: outputs OCM



- 15 countries
 - BE, HR, CZ, DK, EE, GR, IE, LU, LV, NL, PL, ES, SI, SK, CH
- Admin Units, Cadastral parcels, Buildings, Addresses
- Open data & links to data providers on the portal
- WMS, WMTS
- OCM Basemap
- Pan European Cadastral Data Strategy (Dec25)

OME2: User Numbers



OME2: User case studies

Providing a geological base map for the new Digital Structural Model of Italy

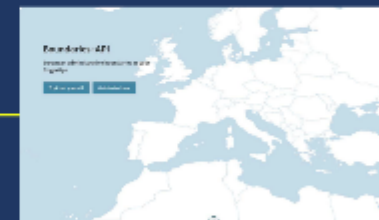
“ We chose EuroRegionalMap because it was free to use and provides continuous, consistent coverage across country borders. Without it, the final DISMI geological maps would not have a topographic base map which would have been a serious shortcoming. ”



**Paolo Conti, Associate Professor of Structural Geology,
University of Siena**

Nazka Mapps brings boundaries into the open with a simple solution for delivering data

“ Without the OME2 project, it would not have been possible to create our Boundaries-API ... we would have to revert to petitioning each country individually, or make use of global datasets that can be unreliable for local situations. ”



Ann Crabbé, Product Owner, boundaries-api.io, Nazka Mapps

OME2: A foundation for future pan-European high-value datasets

- Proves EuroGeographics and its members can deliver large-scale edge-matched data.
- Provides a practical demonstration of the benefits of harmonised national data.
- Demonstrates demand for edge-matched data with higher-than-expected user numbers.
- Enhances Open Cadastral Map and establishes a vision for the future.

OME2: A foundation for future pan-European high-value datasets

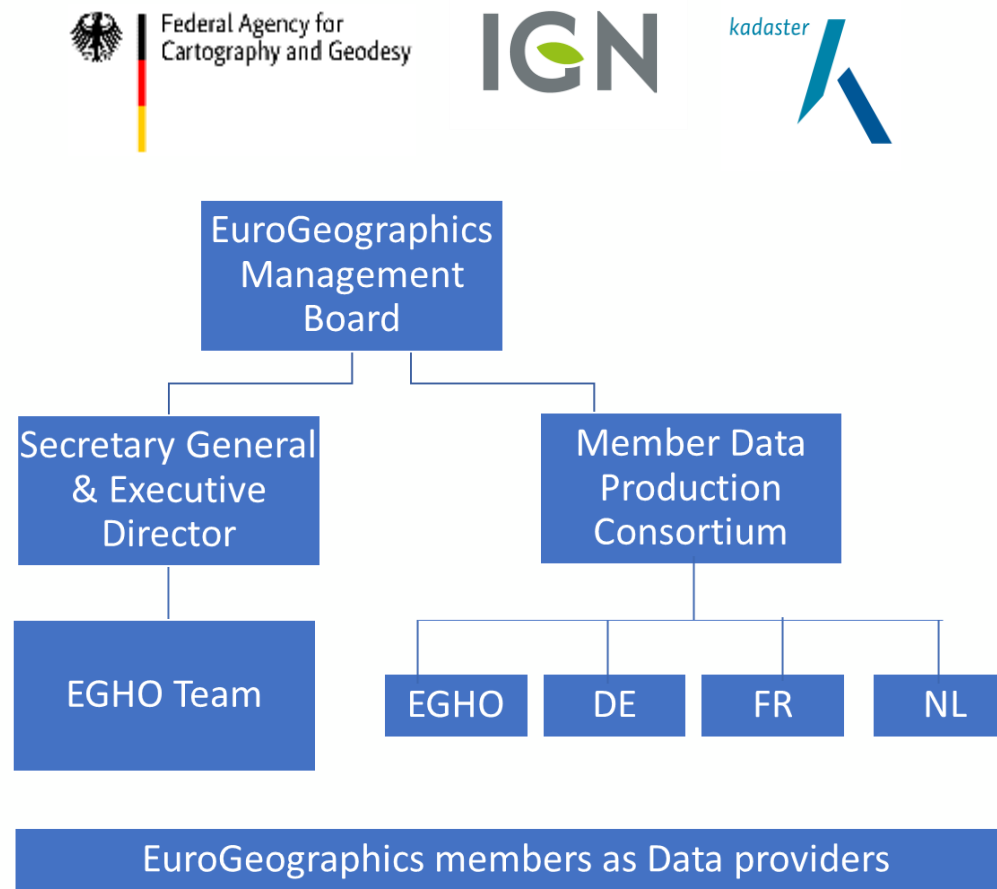
- Strengthens relevance and credibility of EuroGeographics and its members with key stakeholders in the European and Global spheres.



EuroCoreReferenceMap

PROJECT:

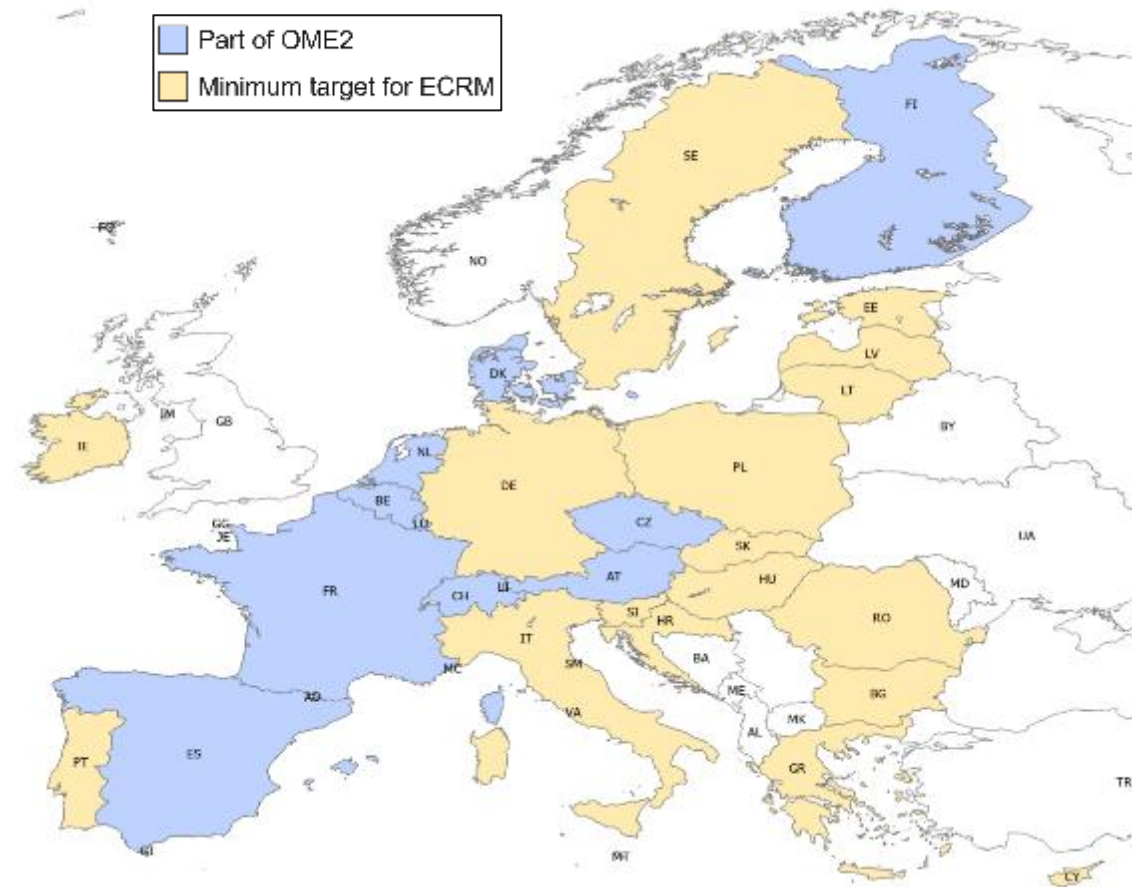
- New member consortium
- Jan 2026 – Dec 2028 (3 years)
- Not necessarily open data
- Continue to work extensively with **stakeholders** to ensure we meet **user requirements**
- Cadastral data will delivery a strategy by December 2025 and this will be reviewed



Vision for ECRM

Euro Core Reference Map (ECRM):
Creating a new authoritative foundation for cross-border applications in Europe

- **Pan-European coverage (EU27 + X):** harmonised and edge-matched data across national borders
- **Large-scale (~1:10 000):** consistent high-resolution topographic information
- **Authoritative data:** trusted official sources from national mapping agencies
- **3 themes:** Admin, Hydro and Trans



Why Open Data?



An era of open data –
changing landscape



End users demand free
to use harmonised data



Members opening
national data



Implementation of the
Open Data PSI Directive

Data licensing at EuroGeographics



EuroBoundaryMap (EBM)



EuroRegionalMap (ERM)

Types of licenses

- Distributor license agreement
- Value-added reseller license agreement
- End-user agreement
- Academic license agreement
- Publishing license agreement (commercial or academic)

Pricing

EuroBoundaryMap Product Prices

User band	European Coverage	Regional Coverage
Small	€ 6,600.00	€ 3,300.00
Medium	€ 19,800.00	€ 9,900.00
Large	€ 39,600.00	€ 19,800.00
Unlimited User	€ 59,400.00	€ 29,700.00

User banding

User bands are consistent across all EuroGeographics products. There are four different user bands:

- Small user – Organisation with 1–10 users
- Medium user – Organisation with 11–100 users
- Large user – Organisation with 101–1000 users
- Unlimited user – Organisation with 1001+ users

Data Supply Fees

$$\begin{array}{l} 10\% \text{ of the data} \\ \text{providers' data} \\ \text{base price} \end{array} \times \begin{array}{l} \text{number of} \\ \text{EBM or ERM} \\ \text{sales made in} \\ \text{Y-1} \end{array} = \begin{array}{l} \text{Y Data Supply Fees} \\ \text{due to} \\ \text{EuroGeographics} \\ \text{Members} \end{array}$$



Questions?

oliwia.marszalek@eurogeographics.org